



Rack Mounting BESS (LV) 5.12 kWh

Smarter Power Better Life



KEY FEATURES



100A

Max. continuous current

OTA

Real-time monitoring & remote upgrades

Easy

No 12V starter cable needed

15 Modules

Supports up to 76.8kWh with parallel Modules

10 Years

Warranty with 1000-hour salt spray test



Rack Mounting BESS (LV) 5.12kWh

Type Designation		SieB-L5120-M	
Technical data			
Nominal energy* [kWh]	5.12		
Usable energy** [kWh]	4.61		
Cell type	LFP (LiFePO4)		
Cell nominal capacity [Ah]	100		
Cell configuration	1P16S		
Nominal voltage [V]	51.2		
Operating voltage range [V]	44.8-56		
Max. continuous current*** [A]	50 (1 module)	100 (≥ 2 modules in parallel)	
Max. continuous power*** [kW]	2.4 (1 module)	4.8 (≥ 2 modules in parallel)	
Communication	CAN	RS485	
Parallel connect	A maximum of 15 Packs with RS485 communication		
Weight [kg]	42		
Dimensions (W*D*H) [mm]	446*500*131		
Operating temperature [°C]	Charge: 4-55/Discharge: -20-55		
Storage temperature [°C]	-20-45 (≤1 Month) / 0-35 (≤1 Year)		
Humidity [%]	0~95		
Altitude*** [m]	≤3000		
Enclosure type	IP20 (Indoor)/IP54 (In Box)		
Cooling	Natural convection		
Installation location	Floor-standing (In Cabinet)		
Display	SOC indicator, Status indicator		
Warranty****	10 Years		

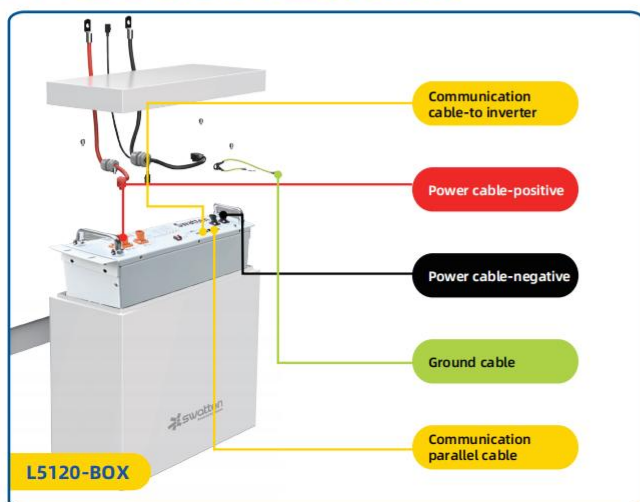
* Test conditions: 2.5V-3.65V, 0.2C Charge (CC-CV) and Discharge at 25±3°C;

** Test conditions: 3.0V-3.5V, 0.2C Charge(CC-CV) and Discharge at 25±3°C;

*** Max. Continuous Current/Power derating will occur related to Temperature / SOC / Humidity;

**** Refer to Swatten SieB-L-M Limited Warranty Letter;

OUTDOOR APPLICATION SCENARIOS



* The box (L5120-BOX) needs to be purchased separately.

Features And Advantages

Perfect adaptation.

- High Protection Level, IP54 protection allows both indoor & outdoor use.
- Can be floor-standing or wall-mounted to satisfy different installation requirements.

Easy Installation

- Preset power cables and auto magnetic gearing design make labor work easier.
- No need to connect a 12V starter cable, Capable of Self-starting.

Box Installation



Full Range From Power Generation,
Transmission, Distribution To

Energy Storage

30 years

With 30+ years of experience,
specialized in equipment manufacturing
and engineering services

Public Co.

Founded in 1993
Stock listed in 2004 (SZSE002028)

US\$2.3 Billion

2023 Turnover

1400+

1411 Qualified engineers are
the driving force behind the
exceptional R&D progress

TOP 3

Sieyuan 思源电气
Electrical Equip. Manufacturer

22

22 Manufacturing bases

60+

With 9500+ employees
in 60+ countries and regions

1,000kV

Full range product: 10kV -1,000kV

esGrid

Grid-level energy storage

Sieyuan Utility Scale BESS



Residential storage solution



Global Marketing & Service Layout

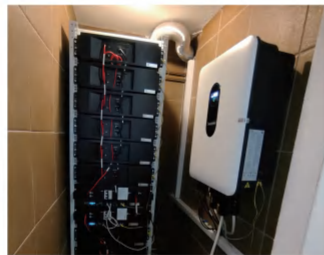


Our Global Clients

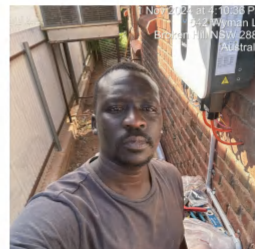




Swatten Europe Case



Swatten APAC Case



Facebook



LinkedIn



YouTube

FOLLOW US!

